

# heatmiser®



neo Stat-hw V2

Model: neo Stat-hw V2

Available in: Sapphire Black and Glacier White





# Table of Contents

|                                 |     |                                  |         |
|---------------------------------|-----|----------------------------------|---------|
| Product Image                   | 1   | Optional Features Explained      | 16      |
| Table of Contents               | 2   | Optional Settings Features Table | 16      |
| Installation Procedure          | 3-4 | Factory Reset                    | 17      |
| Pairing the neoHub              | 5   | Wiring Diagrams                  | 18 - 19 |
| Pairing the neoStat-hw          | 5-6 | Notes                            | 20-22   |
| What is a Mesh Network?         | 6   |                                  |         |
| <br><b>Time Clock Mode</b>      |     |                                  |         |
| Hot Water Time Clock Display    | 7-8 |                                  |         |
| Locking the neoStat-hw          | 9   |                                  |         |
| Unlocking the neoStat-hw        | 9   |                                  |         |
| Setting the Clock               | 10  |                                  |         |
| Setting the Hot Water Times     | 11  |                                  |         |
| Hot Water Boost                 | 12  |                                  |         |
| Standby                         | 13  |                                  |         |
| Holiday                         | 14  |                                  |         |
| Adjusting the Optional Settings | 15  |                                  |         |



## Installation Procedure



### Do

Mount the time clock at eye level.

Read the instructions fully so you get the best from our product.



### Don't

Do not install near to a direct heat source as this will affect functionality.

Do not push hard on the LCD screen as this may cause irreparable damage.

*This neoStat-hw V2 is designed to be flush mounted and requires a back box of 35mm (minimum depth) to be sunk into the wall prior to installation.*

### Step 1

Remove the screw from the bottom face of the time clock then carefully separate the front half from the back plate.

### Step 2

Place the time clock front somewhere safe.

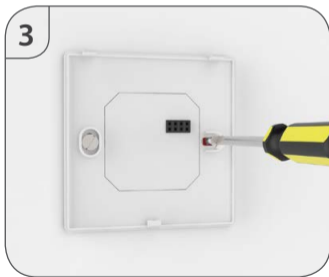
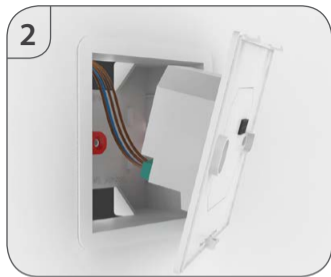
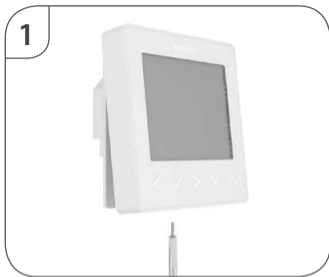
Terminate the time clock as shown in the diagrams on pages 18-19 of this booklet.

### Step 3

Screw the time clock back plate securely into the back box.

### Step 4

Clip the front of the time clock onto the back plate, securing it in place with the retaining screw.





## Pairing the neoHub

To pair the neoHub with the neoApp, follow these steps.





- Connect the neoHub to your router with the Ethernet cable provided.
- Connect the power supply to the neoHub.
- The router will automatically assign an IP address to the neoHub, the Link LED will light up RED once the neoHub has connected to your network.
- Once connected to the Heatmiser cloud server, the Link LED will turn GREEN.
- Connect your smartphone or tablet device to the same WiFi network as your router.
- Download the FREE Heatmiser neoApp from the Apple App Store, Google Play Store or Windows Phone App Store and *register* an account.
- Once you have registered your account, press *Sign In*, then press *Add Location*.
- Press the *connect* button on the neoHub to add the location to your account.
- When successfully connected, enter a title for the location (e.g. Home).



## Pairing the neoStat-hw V2

The next step is to join the neoStat-hw V2 to the neoHub, we recommend joining the neoStat located nearest to the neoHub first.

To add a neoStat-hw V2, follow these steps;

- In the app, select *ADD NEOSTAT*, enter a preset or custom title, then press *NEXT*.
- You now have two minutes to join the neoStat-hw V2 to the neoHub.
- On the neoStat-hw V2, use the Left / Right keys to select , press and hold Tick ...   
- *SETUP* will be highlighted, now press the tick key once .....
- Feature 01 is displayed on screen.

- Press the Tick key once again to pair the neoStat to the neoHub ..... ✓
- The MESH symbol appears flashing on the display.
- When the neoStat-hw V2 successfully connects to the neoHub the MESH symbol will be permanently displayed.
- Press ADD ANOTHER for additional zones or press FINISH to complete setup.

*Please note, you only have to pair the hub to your account once.*

*To pair any additional neoStats, select ZONES, edit, then ADD ZONE.*



## What is a Mesh Network

NeoStats work using a mesh network, meaning neoStats have the ability to send & receive signals via other thermostats on the network. This signal is relayed from one thermostat to another until it reaches its destination. This communication method extends the communication range whilst offering increased network stability when compared with standard RF thermostats.

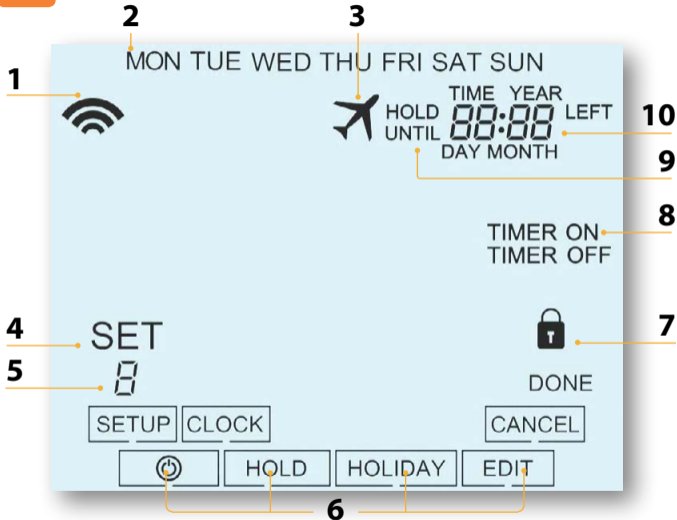
The Mesh symbol is shown when the device is communicating with the neoHub, if the mesh symbol disappears this indicates connection to the neoHub has been lost.



## Approach Sensor

The neoStat-hw V2 uses proximity to detect when you are about to use the touch keys. As you approach the neoStat-hw V2, the touch keys and backlight will light up. This can be useful if you need to adjust the timer in a dark room.

## 2 Mode 2 - Time Clock





1. Mesh Symbol - Displayed when connected to the neoHub.
2. Day Indicator - Displays the day of the week.
3. Holiday – Displayed when the time clock is in holiday mode.
4. Set - Displayed when changes are being made to the current set point.
5. Program Indicator - Displayed during programming to show which level is being altered.
6. Main Menu - Displays which option is currently selected.
7. Keypad Lock Indicator – Displayed when the keypad is locked.
8. Timer Status – Displays the current state of the timed output.
9. Hold Left - Displayed when a timer hold is active, the remaining time will be shown.
10. Time/Day/Month/Year - Displays when setting the Clock/Calendar or a Holiday Period.



## Locking the neoStat-hw V2

The neoStat-hw V2 has a keypad lock facility. To activate the lock follow these steps.

- Use the Left / Right keys to scroll to HOLD & press Tick for 10 seconds < > ✓
- The display will show 00:00 and you will need to enter a four digit pin number.
- Use the Up / Down keys to enter the first two digits ..... ^ v
- Press Tick to confirm ..... ✓
- Use the Up / Down keys to enter the second two digits ..... ^ v
- Press Tick to confirm ..... ✓

The display will return to the main screen and display the keypad lock indicator ....

*Note: The keypad lock indicator is only displayed when the lock is active.*



## Unlocking the neoStat-hw V2

To unlock the neoStat-hw V2 press Tick once. The display will show 00:00 and you will need to enter the four digit pin number you set previously.

- Use the Up / Down and Tick keys to enter the first two digits ..... ^ v ✓
- Use the Up / Down and Tick keys to enter the second two digits ..... ^ v ✓

The display will unlock and return to the main screen.





## Setting the Switching Times



To program the hot water times, follow these steps.

- Use the Left / Right keys to scroll to EDIT and press Tick ..... < > ✓
- Use the Left / Right keys to select day / period of the week ..... < >
- Press Tick to confirm selection ..... ✓
- 1 will now flash and the current ON time will be displayed.
- The OFF time can be viewed by pressing the Down key ..... v
- Select a switching time and press the Tick key ..... ✓
- Use the Up / Down keys to select the ON time HOURS and press Tick ..... ^ v ✓
- Use the Up / Down keys to select the ON time MINUTES ..... ^ v
- Press Tick to confirm selection ..... ✓
- Use the Up / Down keys to select the OFF time HOURS and press Tick ..... ^ v ✓
- Use the Up / Down keys to select the OFF time MINUTES ..... ^ v
- Press Tick to confirm selection ..... ✓
- Press the Right arrow key ..... >
- 2 will now flash and the current ON time will be displayed.
- Repeat the steps above to set all periods. For any unused periods enter -- : --
- When complete, use the Left / Right keys to scroll to DONE and press Tick to confirm all changes ..... < > ✓

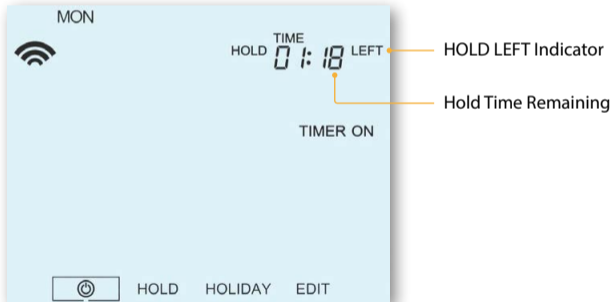


## Timer Override

To override the timed output on, follow these steps.

- Use the Up / Down keys to set the override duration e.g. 02:00 hours ..... 
- Press Tick to confirm settings and return to main display ..... 

Hold Left and the remaining time will now be displayed.





## Standby

To turn the time clock off completely, scroll to the Power Icon and hold the Tick key for approximately 3 seconds until the display goes blank ..... <> ✓

The timed output will be turned OFF during Standby mode.

To turn the time clock back ON, press the Tick key once ..... ✓

Time clock completely OFF



Time clock powered ON





## Holiday

During the holiday period the timed output will remain OFF.

Set a date & time for the holiday period to end, using the steps below;


- Use the Left / Right keys to scroll to HOLIDAY and press Tick ..... <>✓
- Use the Up / Down keys to set the year ..... ^v
- Press Tick ..... ✓
- Use the Up / Down keys to set the month ..... ^v
- Press Tick ..... ✓
- Repeat the steps to set the Date & Time ..... ^v
- Pressing Tick to confirm selection ..... ✓

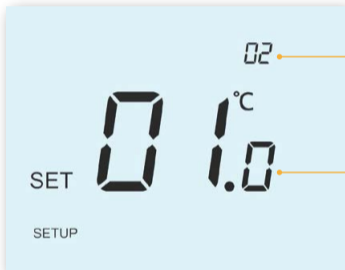
*Note: The holiday period will start immediately, and will return to the normal program at the time & date you have configured.*

- Use the Left / Right keys to scroll to HOLIDAY and press Tick ..... <>✓
- CANCEL will be highlighted, Press Tick to cancel ..... ✓



## Adjusting the Optional Settings

- Use the Left / Right keys to scroll to  .....
- Press and hold the Tick button for 3 seconds .....
- SETUP will be highlighted, now press the tick key once .....



- Use the Up / Down keys to scroll through features .....
- Use the Left / Right keys to adjust the setting within each feature .....
- Press Tick to confirm and exit setup menu .....







## Optional Features Explained

**Feature 01 – Pairing to neoHub:** This function is used to connect the time clock to the neoHub.

**Feature 02 - Weekday/Weekend (5/2), 7 Day Programming or 24 Hour Mode:**

The time clock offers three programming methods;

**Weekday/ Weekend (5/2)** - Allows you to program 4 on/off switching times for the weekdays and 4 on/off switching times for the weekend.

**7 Day Program Mode** - Each day has 4 on/off switching times that can be programmed independently.

**24 Hour Mode** - All days are programmed with the same on/off switching times.










## Optional Settings - Feature Table

| FEATURE | DESCRIPTION  | SETTING   |
|---------|--------------|---|
| 01      | Pairing      | Used to pair to the neoHub  |
| 02      | Program Mode | 01 = Weekday/Weekend Programming (Default)<br>02 = 7 Day Programming<br>03 = 24 Hour Mode |



## Factory Reset

To reset the device to factory default settings, follow these steps:

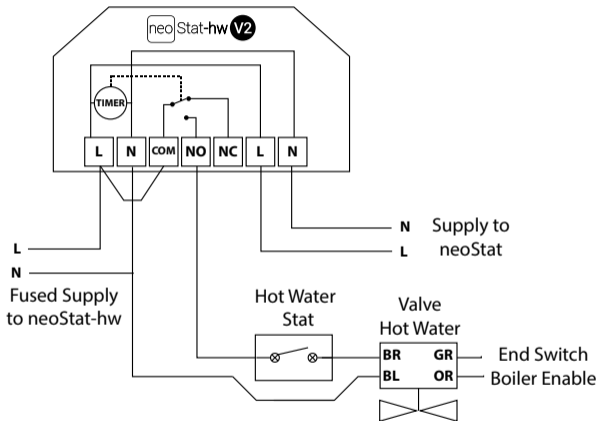
- Use the Left / Right keys to scroll to  .....  
- Press and hold Tick to turn the display OFF ..... ✓
- SETUP will be highlighted .....  
- Press and hold the Tick key for 10 seconds ..... ✓
- All of the icons on the display will appear for 2 seconds, then you will see the number 1 or 2 flashing.
- Use the Left / Right keys to scroll between modes .....  
  - Mode 1 = Thermostat
  - Mode 2 = Time Clock
- Press the Tick key to confirm selection ..... ✓

The neoStat will revert to the main display screen for the selected mode.

*Note: Factory reset will cancel all parameters that were entered during the set-up and pairing operations. These processes must be repeated after factory reset is completed.*



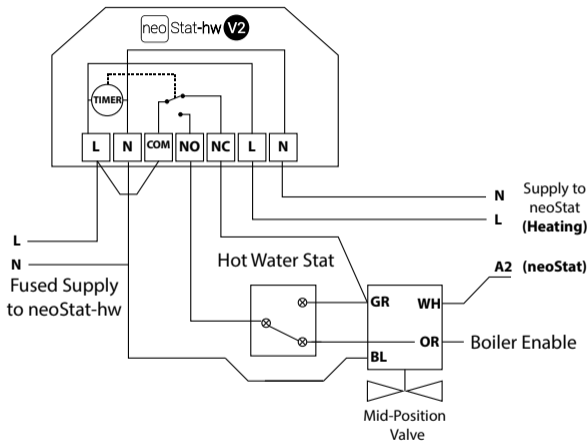
## Wiring Diagram - neoStat-hw (S Plan)



This product must only be installed by a qualified electrician and comply with local installation regulations.



## Wiring Diagram - neoStat-hw (mid position valve)



This product must only be installed by a qualified electrician and comply with local installation regulations.



# Notes

A series of 20 horizontal dotted lines for writing notes.



# Notes

A series of horizontal dotted lines for writing notes.



## Notes

A series of horizontal dotted lines for taking notes, spanning the width of the page.



## Want More Information?

Call our support team on: +44 (0)1254 669090

Or view technical specifications directly on our website:  
[www.heatmiser.com](http://www.heatmiser.com)



PDF



FAQ



Twitter: @heatmiseruk



Facebook: [facebook.com/thermostats](https://facebook.com/thermostats)